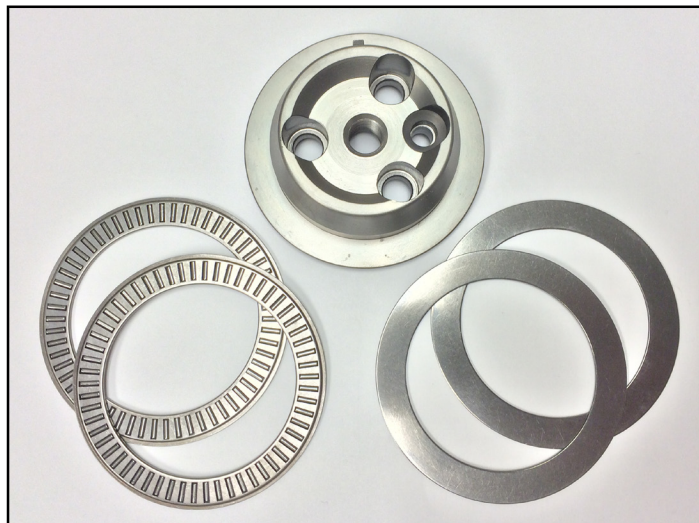


Zero Thrust Cam Adaptor

KCA-39260, SB Chevrolet (ADP-30260)

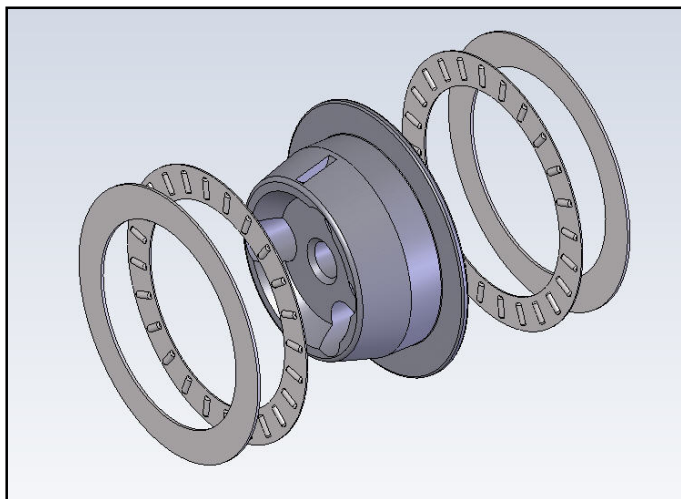
KCA-39290, BB Chevrolet (ADP-30290)



JESEL ZERO-THRUST CAM ADAPTER IS DESIGNED TO ELIMINATE LIFTER DAMAGING CAMSHAFT ENDPLAY. THIS ADAPTER IS MANUFACTURED FROM A HEAT TREATED TOOL STEEL AND IS SILVER IN COLOR. THE CYLINDER BLOCK MUST BE MACHINED TO RUN THIS ADAPTER. THE CAMSHAFT ENDPLAY CAN BE RUN AS TIGHT AT .001".

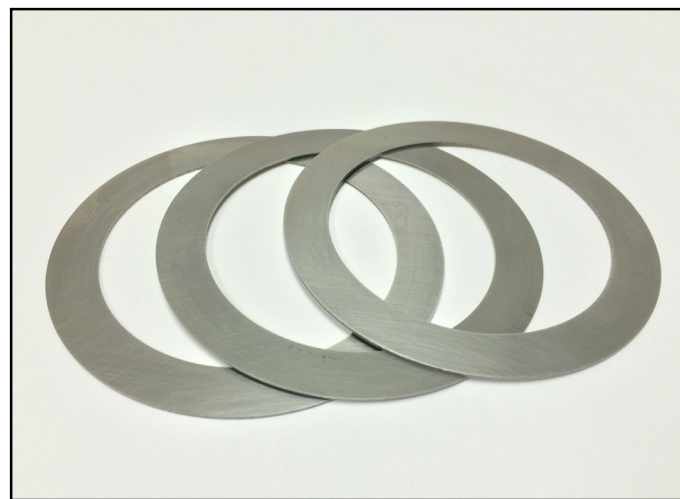


THE CAM TUNNEL MUST BE MACHINED 3.000" DIAMETER x .070" DEEP TO ACCEPT THE REAR TORRINGTON BEARING AND WASHER.



JESEL, INC
1985 CEDAR BRIDGE AVE
SUITE 2
LAKEWOOD, NJ 08701
732-901-1800, FAX 732-901-6777

www.jesel.com



IF NEEDED, DOUBLE-DISC GROUND THRUST WASHERS ARE AVAILABLE TO ADJUST CAMSHAFT END PLAY.

WSH-30810-25 3.000" OD X 2.250" ID X .025"
WSH-30810-27 3.000" OD X 2.250" ID X .027"
WSH-30810-29 3.000" OD X 2.250" ID X .029"